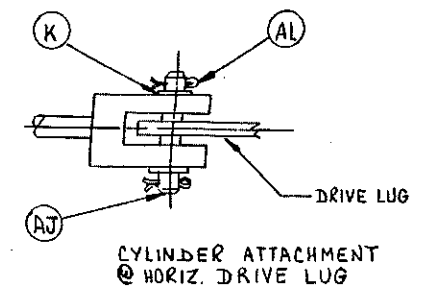
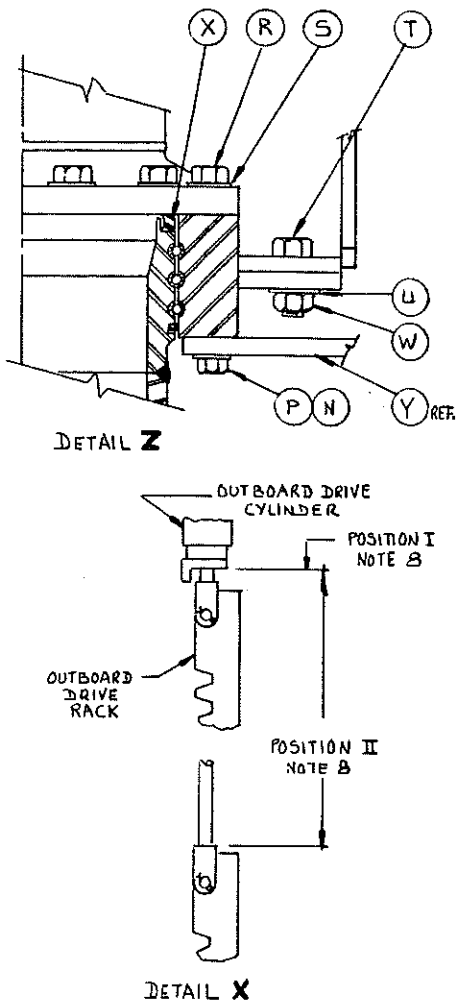
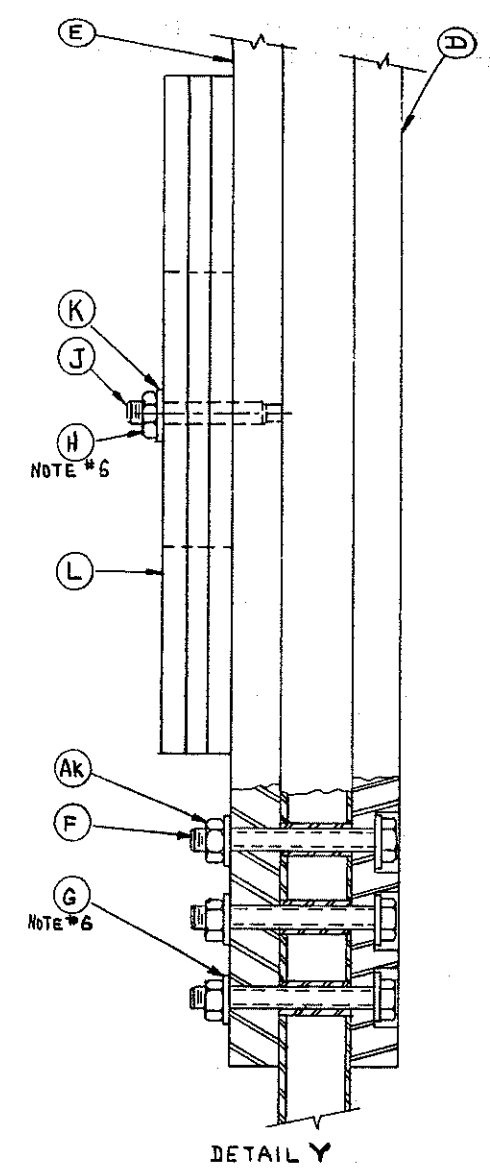


- NOTES:
1. RCMA DENOTES "ROTARY COUNTERWEIGHT MARINE ARM".
 2. FASTENER FINISHES FMC SPECIFICATION FS-1.
 3. BASE RISER (ITEM C) TO BE INITIALLY BY INSERTING SHIMS AT BASE TO LEVEL FACE OF COUPLER. (SEE INSTALLATION INSTRUCTIONS)
 4. ARM IS BALANCED EMPTY AND MUST BE DRAINED OF PRODUCT BEFORE MOVING TO OR FROM VESSEL. MEANS OF DRAINAGE BY OTHER.
 5. ADD TRIM WEIGHTS (ITEM "AG") AS REQUIRED FOR INBOARD ARM TO HAVE A SLIGHT TENDENCY TO RETURN TO THE STORED POSITION.
 6. TORQUE ITEM "H" TO 250 FOOT POUNDS & THE NUT OF ITEM "F" TO 650 FOOT POUNDS.
 7. ASSEMBLY HAS BEEN PAINTED PER 16629-31.
 8. RACK & PINION GEAR LOCATIONS:
 POSITION I:
 WITH INBOARD ARM IN THE STORED POSITION (AS SHOWN) THE HYDRAULIC CYLINDER ROD END AND RACK ARE TO BE FULLY RETRACTED WITH ONLY 15/16" OF ROD EXPOSED.
 POSITION II:
 WITH OUTBOARD ARM (AND ROTARY COUNTERWEIGHTS) 90° TO INBOARD ARM, THE AMOUNT OF EXPOSED CYLINDER ROD ON THE RACK END IS TO BE 15 15/32" ± 3/16".
 9. LUBRICATE CYLINDER TRUNNION PINS AT TIME OF ASSEMBLY WITH FMC # 315574 (*7) GREASE.



AN	1	16629-27A	HYD. TUBING DETAIL VACUUM BREAKER	31
AM	1	16629-28A	TRAVEL LIMIT ALARM	-
AL	2	3226777	PIN-COTTER, 1/4" DIA. x 2", STL.	-
AK	6	3243831	NUT, HEX, 1"-8NC, A325, STL.	-
AJ	1	3125245	PIN, CYLINDER, 1" DIA, x 3 1/4" LG, STL.	1
AH	1	16629-29A	TUBING DETAIL ON ARM	-
AG	6	N100984	TRIM WEIGHT, FIXED, STL.	708
AF	1	N100985	FIXEL LOCK, STAINLESS STEEL	-
AE	3	N100974	RAIL SPLICE CONNECTOR, SST.	-
AD	2	N100982	LADDER SECTION W/CUT-OUTS, 2.8M	70
AC	1	N100973	LADDER SECTION, 2.8M, STL., GALVA.	35
AB	6	N100972	LADDER CLAMP W/SET SCREW, STL. GALV.	12
AA	2	3238919	NUT-JAM, HEX, 2"-4 1/2 UNC. STL.	1
Z	2	3103480	SCREW-ADJUSTMENT, STEEL	6
Y	1	16487-8A	MTG. BRKT. HORIZ CYLINDER, STL.	86
X	1	3115389	PACKING -12" LPS (HH / SST)	-
W	8	3155678	NUT-REG, HEX, 1 1/4"-7, STL.	5
LL	8	3239763	WASHER-ASA NARROW, 1 1/4", STL.	1
T	8	3152047	BOLT-REG, HEX, HD, 1 1/4"-7x4", STL.	17
S	12	3239761	WASHER-ASA NARROW, 7/8", STL.	-
R	12	3238152	SCREW-CAP, HEX, HD, 7/8"-9x2 1/2", STL.	8
P	4	3238957	WASHER-ASA NARROW, 3/4", STL.	-
N	4	3238916	SCREW-CAP HEX, HD, 3/4"-10x2", STL.	2
M	1	3155592	CYLINDER-HYDRAULIC, 3 1/2"x17", STL.	86
L	2	16600-63G	TRIM WEIGHT-ROTARY, STEEL	334
K	8	3238984	WASHER-ASA WIDE, 1", STEEL	2
J	2	3140117	STUD BOLT, 1"-8 x 5" STEEL	2
H	6	3239697	NUT-HVY, HEX, 1"-8, STEEL	3
G	12	3154090	WASHER-ASA, 1", A325, STL.	2
F	6	N101443	BOLT -HEX, HD, 1"-8 x 10 1/2", A325, STL.	16
E	1	16629-161A	COUNTERWEIGHT, SECONDARY, STEEL	3236
D	1	16629-62A	COUNTERWEIGHT, MAIN, STEEL	2158
C	1	16629-104A	RISER ASSEMBLY	4221
B	1	16629-103A	ARM ASSEMBLY	7466
A	1		MECHANICAL ASSEMBLY	18509

ITEM	REQUIRED	PART NUMBER	DESCRIPTION, MATERIAL AND SPECIFICATION (ALL PURCHASED PARTS AS SPECIFIED OR EQUAL)	EST WEIGHT
<p>ALL THE INFORMATION IN THIS PROPOSAL IS CONFIDENTIAL AND HAS BEEN PREPARED FOR YOUR USE ONLY IN CONNECTION WITH THE PURCHASE OF THE EQUIPMENT DESCRIBED. YOU MAY NOT USE IT FOR ANY OTHER PURPOSE OR DISCLOSE OR PERMIT IT TO BE DISCLOSED TO ANY OTHER PERSON WITHOUT EXPRESS WRITTEN PERMISSION OF FMC CORPORATION.</p> <p>ARTICLES MANUFACTURED IN ACCORDANCE WITH THESE DRAWINGS SHALL BE CONSIDERED FACTOR BEHIND AND MANUFACTURER'S MARK NOT TO MANUFACTURE FOR THE USE OR SALE BY ANY OTHER PERSON OR CONCERN OR FOR MANUFACTURER'S USE OR SALE WITHOUT WRITTEN PERMISSION OF FMC CORPORATION.</p> <p>REVISIONS: 1. 16629-102 2. 16629-103 3. 16629-104 4. 16629-105 5. 16629-106 6. 16629-107 7. 16629-108 8. 16629-109 9. 16629-110 10. 16629-111 11. 16629-112 12. 16629-113 13. 16629-114 14. 16629-115 15. 16629-116 16. 16629-117 17. 16629-118 18. 16629-119 19. 16629-120 20. 16629-121 21. 16629-122 22. 16629-123 23. 16629-124 24. 16629-125 25. 16629-126 26. 16629-127 27. 16629-128 28. 16629-129 29. 16629-130 30. 16629-131 31. 16629-132 32. 16629-133 33. 16629-134 34. 16629-135 35. 16629-136 36. 16629-137 37. 16629-138 38. 16629-139 39. 16629-140 40. 16629-141 41. 16629-142 42. 16629-143 43. 16629-144 44. 16629-145 45. 16629-146 46. 16629-147 47. 16629-148 48. 16629-149 49. 16629-150 50. 16629-151 51. 16629-152 52. 16629-153 53. 16629-154 54. 16629-155 55. 16629-156 56. 16629-157 57. 16629-158 58. 16629-159 59. 16629-160 60. 16629-161 61. 16629-162 62. 16629-163 63. 16629-164 64. 16629-165 65. 16629-166 66. 16629-167 67. 16629-168 68. 16629-169 69. 16629-170 70. 16629-171 71. 16629-172 72. 16629-173 73. 16629-174 74. 16629-175 75. 16629-176 76. 16629-177 77. 16629-178 78. 16629-179 79. 16629-180 80. 16629-181 81. 16629-182 82. 16629-183 83. 16629-184 84. 16629-185 85. 16629-186 86. 16629-187 87. 16629-188 88. 16629-189 89. 16629-190 90. 16629-191 91. 16629-192 92. 16629-193 93. 16629-194 94. 16629-195 95. 16629-196 96. 16629-197 97. 16629-198 98. 16629-199 99. 16629-200 100. 16629-201 101. 16629-202 102. 16629-203 103. 16629-204 104. 16629-205 105. 16629-206 106. 16629-207 107. 16629-208 108. 16629-209 109. 16629-210 110. 16629-211 111. 16629-212 112. 16629-213 113. 16629-214 114. 16629-215 115. 16629-216 116. 16629-217 117. 16629-218 118. 16629-219 119. 16629-220 120. 16629-221 121. 16629-222 122. 16629-223 123. 16629-224 124. 16629-225 125. 16629-226 126. 16629-227 127. 16629-228 128. 16629-229 129. 16629-230 130. 16629-231 131. 16629-232 132. 16629-233 133. 16629-234 134. 16629-235 135. 16629-236 136. 16629-237 137. 16629-238 138. 16629-239 139. 16629-240 140. 16629-241 141. 16629-242 142. 16629-243 143. 16629-244 144. 16629-245 145. 16629-246 146. 16629-247 147. 16629-248 148. 16629-249 149. 16629-250 150. 16629-251 151. 16629-252 152. 16629-253 153. 16629-254 154. 16629-255 155. 16629-256 156. 16629-257 157. 16629-258 158. 16629-259 159. 16629-260 160. 16629-261 161. 16629-262 162. 16629-263 163. 16629-264 164. 16629-265 165. 16629-266 166. 16629-267 167. 16629-268 168. 16629-269 169. 16629-270 170. 16629-271 171. 16629-272 172. 16629-273 173. 16629-274 174. 16629-275 175. 16629-276 176. 16629-277 177. 16629-278 178. 16629-279 179. 16629-280 180. 16629-281 181. 16629-282 182. 16629-283 183. 16629-284 184. 16629-285 185. 16629-286 186. 16629-287 187. 16629-288 188. 16629-289 189. 16629-290 190. 16629-291 191. 16629-292 192. 16629-293 193. 16629-294 194. 16629-295 195. 16629-296 196. 16629-297 197. 16629-298 198. 16629-299 199. 16629-300 200. 16629-301 201. 16629-302 202. 16629-303 203. 16629-304 204. 16629-305 205. 16629-306 206. 16629-307 207. 16629-308 208. 16629-309 209. 16629-310 210. 16629-311 211. 16629-312 212. 16629-313 213. 16629-314 214. 16629-315 215. 16629-316 216. 16629-317 217. 16629-318 218. 16629-319 219. 16629-320 220. 16629-321 221. 16629-322 222. 16629-323 223. 16629-324 224. 16629-325 225. 16629-326 226. 16629-327 227. 16629-328 228. 16629-329 229. 16629-330 230. 16629-331 231. 16629-332 232. 16629-333 233. 16629-334 234. 16629-335 235. 16629-336 236. 16629-337 237. 16629-338 238. 16629-339 239. 16629-340 240. 16629-341 241. 16629-342 242. 16629-343 243. 16629-344 244. 16629-345 245. 16629-346 246. 16629-347 247. 16629-348 248. 16629-349 249. 16629-350 250. 16629-351 251. 16629-352 252. 16629-353 253. 16629-354 254. 16629-355 255. 16629-356 256. 16629-357 257. 16629-358 258. 16629-359 259. 16629-360 260. 16629-361 261. 16629-362 262. 16629-363 263. 16629-364 264. 16629-365 265. 16629-366 266. 16629-367 267. 16629-368 268. 16629-369 269. 16629-370 270. 16629-371 271. 16629-372 272. 16629-373 273. 16629-374 274. 16629-375 275. 16629-376 276. 16629-377 277. 16629-378 278. 16629-379 279. 16629-380 280. 16629-381 281. 16629-382 282. 16629-383 283. 16629-384 284. 16629-385 285. 16629-386 286. 16629-387 287. 16629-388 288. 16629-389 289. 16629-390 290. 16629-391 291. 16629-392 292. 16629-393 293. 16629-394 294. 16629-395 295. 16629-396 296. 16629-397 297. 16629-398 298. 16629-399 299. 16629-400 300. 16629-401 301. 16629-402 302. 16629-403 303. 16629-404 304. 16629-405 305. 16629-406 306. 16629-407 307. 16629-408 308. 16629-409 309. 16629-410 310. 16629-411 311. 16629-412 312. 16629-413 313. 16629-414 314. 16629-415 315. 16629-416 316. 16629-417 317. 16629-418 318. 16629-419 319. 16629-420 320. 16629-421 321. 16629-422 322. 16629-423 323. 16629-424 324. 16629-425 325. 16629-426 326. 16629-427 327. 16629-428 328. 16629-429 329. 16629-430 330. 16629-431 331. 16629-432 332. 16629-433 333. 16629-434 334. 16629-435 335. 16629-436 336. 16629-437 337. 16629-438 338. 16629-439 339. 16629-440 340. 16629-441 341. 16629-442 342. 16629-443 343. 16629-444 344. 16629-445 345. 16629-446 346. 16629-447 347. 16629-448 348. 16629-449 349. 16629-450 350. 16629-451 351. 16629-452 352. 16629-453 353. 16629-454 354. 16629-455 355. 16629-456 356. 16629-457 357. 16629-458 358. 16629-459 359. 16629-460 360. 16629-461 361. 16629-462 362. 16629-463 363. 16629-464 364. 16629-465 365. 16629-466 366. 16629-467 367. 16629-468 368. 16629-469 369. 16629-470 370. 16629-471 371. 16629-472 372. 16629-473 373. 16629-474 374. 16629-475 375. 16629-476 376. 16629-477 377. 16629-478 378. 16629-479 379. 16629-480 380. 16629-481 381. 16629-482 382. 16629-483 383. 16629-484 384. 16629-485 385. 16629-486 386. 16629-487 387. 16629-488 388. 16629-489 389. 16629-490 390. 16629-491 391. 16629-492 392. 16629-493 393. 16629-494 394. 16629-495 395. 16629-496 396. 16629-497 397. 16629-498 398. 16629-499 399. 16629-500 400. 16629-501 401. 16629-502 402. 16629-503 403. 16629-504 404. 16629-505 405. 16629-506 406. 16629-507 407. 16629-508 408. 16629-509 409. 16629-510 410. 16629-511 411. 16629-512 412. 16629-513 413. 16629-514 414. 16629-515 415. 16629-516 416. 16629-517 417. 16629-518 418. 16629-519 419. 16629-520 420. 16629-521 421. 16629-522 422. 16629-523 423. 16629-524 424. 16629-525 425. 16629-526 426. 16629-527 427. 16629-528 428. 16629-529 429. 16629-530 430. 16629-531 431. 16629-532 432. 16629-533 433. 16629-534 434. 16629-535 435. 16629-536 436. 16629-537 437. 16629-538 438. 16629-539 439. 16629-540 440. 16629-541 441. 16629-542 442. 16629-543 443. 16629-544 444. 16629-545 445. 16629-546 446. 16629-547 447. 16629-548 448. 16629-549 449. 16629-550 450. 16629-551 451. 16629-552 452. 16629-553 453. 16629-554 454. 16629-555 455. 16629-556 456. 16629-557 457. 16629-558 458. 16629-559 459. 16629-560 460. 16629-561 461. 16629-562 462. 16629-563 463. 16629-564 464. 16629-565 465. 16629-566 466. 16629-567 467. 16629-568 468. 16629-569 469. 16629-570 470. 16629-571 471. 16629-572 472. 16629-573 473. 16629-574 474. 16629-575 475. 16629-576 476. 16629-577 477. 16629-578 478. 16629-579 479. 16629-580 480. 16629-581 481. 16629-582 482. 16629-583 483. 16629-584 484. 16629-585 485. 16629-586 486. 16629-587 487. 16629-588 488. 16629-589 489. 16629-590 490. 16629-591 491. 16629-592 492. 16629-593 493. 16629-594 494. 16629-595 495. 16629-596 496. 16629-597 497. 16629-598 498. 16629-599 499. 16629-600 500. 16629-601 501. 16629-602 502. 16629-603 503. 16629-604 504. 16629-605 505. 16629-606 506. 16629-607 507. 16629-608 508. 16629-609 509. 16629-610 510. 16629-611 511. 16629-612 512. 16629-613 513. 16629-614 514. 16629-615 515. 16629-616 516. 16629-617 517. 16629-618 518. 16629-619 519. 16629-620 520. 16629-621 521. 16629-622 522. 16629-623 523. 16629-624 524. 16629-625 525. 16629-626 526. 16629-627 527. 16629-628 528. 16629-629 529. 16629-630 530. 16629-631 531. 16629-632 532. 16629-633 533. 16629-634 534. 16629-635 535. 16629-636 536. 16629-637 537. 16629-638 538. 16629-639 539. 16629-640 540. 16629-641 541. 16629-642 542. 16629-643 543. 16629-644 544. 16629-645 545. 16629-646 546. 16629-647 547. 16629-648 548. 16629-649 549. 16629-650 550. 16629-651 551. 16629-652 552. 16629-653 553. 16629-654 554. 16629-655 555. 16629-656 556. 16629-657 557. 16629-658 558. 16629-659 559. 16629-660 560. 16629-661 561. 16629-662 562. 16629-663 563. 16629-664 564. 16629-665 565. 16629-666 566. 16629-667 567. 16629-668 568. 16629-669 569. 16629-670 570. 16629-671 571. 16629-672 572. 16629-673 573. 16629-674 574. 16629-675 575. 16629-676 576. 16629-677 577. 16629-678 578. 16629-679 579. 16629-680 580. 16629-681 581. 16629-682 582. 16629-683 583. 16629-684 584. 16629-685 585. 16629-686 586. 16629-687 587. 16629-688 588. 16629-689 589. 16629-690 590. 16629-691 591. 16629-692 592. 16629-693 593. 16629-694 594. 16629-695 595. 16629-696 596. 16629-697 597. 16629-698 598. 16629-699 599. 16629-700 600. 16629-701 601. 16629-702 602. 16629-703 603. 16629-704 604. 16629-705 605. 16629-706 606. 16629-707 607. 16629-708 608. 16629-709 609. 16629-710 610. 16629-711 611. 16629-712 612. 16629-713 613. 16629-714 614. 16629-715 615. 16629-716 616. 16629-717 617. 16629-718 618. 16629-719 619. 16629-720 620. 16629-721 6</p>				